



Come home to

Bandar Dato' Onn

Johor Bahru

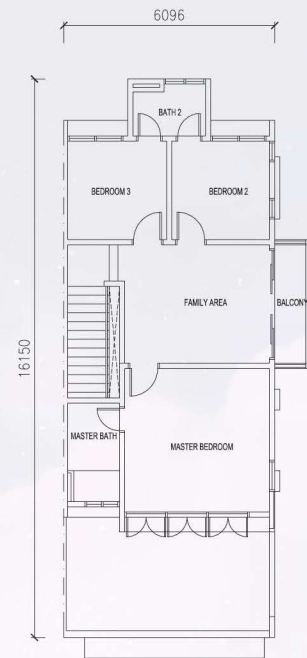
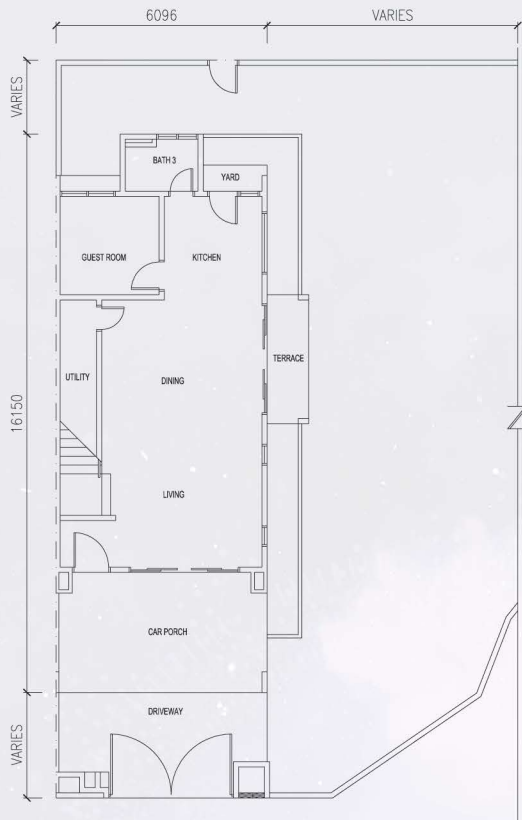
A Jewel OF
ISKANDAR MALAYSIA...

amelia 2

2 storey terrace house

20' X 70' | Built-up area:
1,744 sf





◀ ground floor | first floor ▶

STRUCTURE	Reinforced Concrete
WALL	Clay Brick
ROOF COVERING	Clay Tiles, Reinforced Concrete Flat Roof
ROOF FRAMING	Steel
CEILING	Skim Coat, Plaster Ceiling
WINDOWS	Aluminium Framed Glass Window Adjustable Louvres Window with Top Hung Above
DOORS	Solid Timber Door 'Engineered' Timber Door 'Engineered' Timber Door with Top Hung Glass Above Aluminium Framed Glass Door with Top Hung Glass Above
IRONMONGERY	Lever, Knob
WALL FINISHES	
Kitchen	2100mm Height Ceramic Tiles & Emulsion Paint
Master Bathroom	Ceiling Height Porcelain Tiles
Bath 2 & 3	Ceiling Height Ceramic Tiles
Bin Compartment	Ceramic Tiles
Others	Cement Plaster & Emulsion Paint
FLOOR FINISHES	
Living	Porcelain Tiles
Dining	Porcelain Tiles
Kitchen	Porcelain Tiles
Staircase	Porcelain Tiles
Family Area	Porcelain Tiles
Master Bedroom	Porcelain Tiles
Bedroom 2 & 3	Porcelain Tiles
Guest Room	Porcelain Tiles
Master Bathroom	Porcelain Tiles
Bath 2 & 3	Ceramic Tiles
Terrace & Balcony (Corner Unit)	Porcelain Tiles
Car Porch	Porcelain Tiles
Driveway	Cement Render
Store	Cement Render
Yard	Cement Render
Bin Compartment	Ceramic Tiles

floor plan

PLUMBING AND SANITARY FITTINGS

Bathroom	Water Closet, Hand Wash Basin, Tissue Holder, Shower Rose, Hand Bidet
Kitchen	Set of Sink, Tap
Bin Compartment	Tap
Yard	Tap

ELECTRICAL INSTALLATION

	CORNER UNIT	INTERMEDIATE UNIT	END UNIT
Lighting Point	30	28	28
Socket Point	24	24	24
Fan Point	7	7	7
Data Point	3	3	3
TV Antenna Point	3	3	3
Air-Cond Point	4	4	4
Water Heater Point	1	1	1
Bell Point	1	1	1
Power Auto Gate Point	2	2	2
Isolator Point	1	-	-

INTERNAL TELECOMMUNICATION

TRUNKING CABLING AND SUPPLY

FENCING

Gate	Steel
Fencing	Cement Brick with Mild Steel Grille

TURFING

GAS PIPING

	Included
	NIL



07 360 2692

No. Lesen Pemaju: 8918-41/09-2021/0842(L), No. Permit Iklan & Jualan: 8918-41/09-2021/0842(P), Tempoh Sah: Dari: 19/9/2019 hingga 18/9/2021
Pegangan Tanah: Hakmilik kekal, Bebanan Tanah: Tiada. Pihak Berkuasa yang Meluluskan: Majlis Bandaraya Johor Bahru, No. Pelan Bangunan (HAB): WJB/B/0/2016/14/BGN/1651/4, Jenis Rumah: 1: Rumah Teres 2 Tingkat (AMELIA 2); Luas Binaan: 1,744kq, Luas Tanah: 1,400kq, Jumlah Unit: 36 unit, Harga Min: RM723,000 - Max: RM1,050,000, Jenis Rumah: 2: Rumah Teres 2 Tingkat (AMELIA 3); Luas Binaan: 1,829kq, Luas Tanah: 1,400kq, Jumlah Unit: 38 unit, Harga Min: RM758,000 - Max: RM1,140,900, Jenis Rumah: 3: Rumah Berkembar 2 Tingkat (EVELYN 1); Luas Binaan: 3,245kq, Luas Tanah: 3,200kq, Jumlah Unit: 26 unit, Harga Min: RM1,622,000 - Max: RM2,143,800, Diskaun 15% untuk Bumiputera. Tarikh dijangka siap: 31 Julai 2021. Pemaju: JOHOR LAND BERHAD, Alamat Pemaju: Kompleks Mutiara Johor Land, Jalan Bukit Mutiara, Bandar Dato' Onn 81100, Johor Bahru, No Tel: 07-360 2692. Sekatan Kepentingan: Tanah yang terkandung di dalam hakmilik ini tidak boleh dijual atau dipindahmilik dengan apacara sekalipun kepada Bukan Warganegara/Syarikat Asing tanpa persetujuan Pihak Berkuasa Negeri.
IKLAN INI TELAH DILULUSKAN OLEH JABATAN PERUMAHAN NEGARA

Developer :
JOHOR LAND BERHAD
(A member of Johor Corporation group of companies) 12379-K

Main Office :

Kompleks Mutiara Johor Land, Jalan Bukit Mutiara, Bandar Dato' Onn, 81100 Johor Bahru. Tel : (07) 3564 888 Fax : (07) 3564 889

Sales Gallery :

No. 2, Jalan Perjiranan 2/1, Perjiranan 2, Bandar Dato' Onn, 81100, Johor Bahru. Tel : (07) 360 2692 Fax : (07) 360 2693