

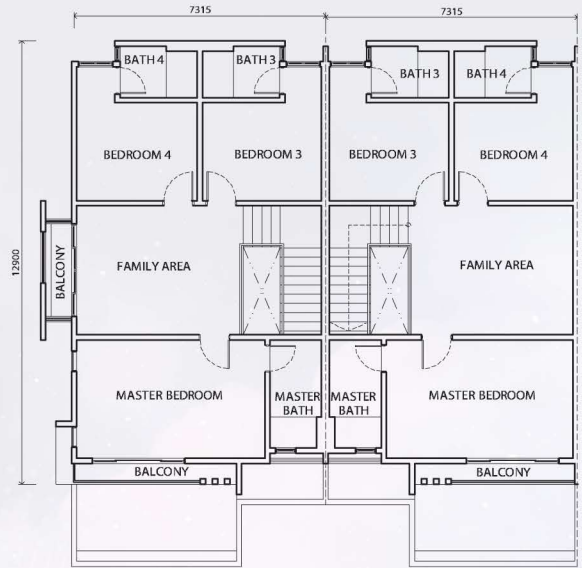
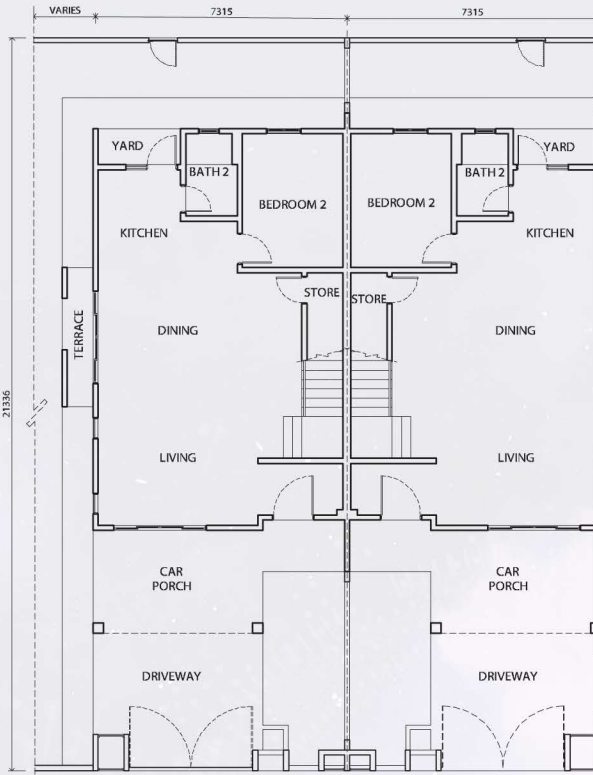
Come home to
BandarDato'Onn
Johor Bahru
A Jewel OF
ISKANDAR MALAYSIA...

clover 1

2 storey terrace house

24' X 70' | Built-up area:
2,073 sf





◀ ground floor | first floor ▶

STRUCTURE	Reinforced Concrete
WALL	Clay Bricks
ROOF COVERING	Clay Tiles
ROOF FRAMING	Steel
CEILING	Skim Coat, Plaster Ceiling, Cement Board
WINDOWS	Aluminium Framed Glass Window
DOORS	Solid Timber Door Solid Engineered / Timber Door Aluminium Framed Glass Sliding Door
IRONMONGERY	Lever, Knob
WALL FINISHES	
Kitchen	2100mm Height Ceramic Tiles & Emulsion Paint
Bathroom	Ceiling Height with Porcelain Tiles
Bin Compartment	Ceramic Tiles
Others	Cement Plaster & Emulsion Paint
FLOOR FINISHES	
Living	Porcelain Tiles
Dining	Porcelain Tiles
Kitchen	Porcelain Tiles
Staircase	Porcelain Tiles
Family Area	Porcelain Tiles
Master Bedroom	Porcelain Tiles
Bedroom 2, 3 & 4	Porcelain Tiles
Master Bathroom	Porcelain Tiles
Bath 2, 3 & 4	Porcelain Tiles
Balcony	Porcelain Tiles
Terrace (Corner Unit)	Porcelain Tiles
Car Porch	Porcelain Tiles
Driveway	Cement Render
Bin Compartment	Ceramic Tiles
Store	Cement Render
Others	Cement Render
Garden Tap Area	Ceramic Tiles

PLUMBING AND SANITARY FITTINGS

Master Bathroom,
Bathroom 2, 3 & 4

Kitchen
Yard

ELECTRICAL INSTALLATION

Lighting Point
Power Point
Fan Point
TV Antenna Point
Air-Cond Point
Water Heater Point
Bell Point
Power Auto Gate Point
Isolator Point
Data Point
Telephone Point

INTERNAL TELECOMMUNICATION

TRUNKING CABLING AND SUPPLY

FENCING

Front & Front Side Fencing
Rear Side Fencing
Rear
Front & Rear Gate Door

TURFING

GAS PIPING

Water Closet, Wash Hand Basin,
Shower Rose, Tissue Holder
Hand Bidet, Hose Bib Tap
Set of Sink, Tap
Tap

	CORNER UNIT	INTERMEDIATE UNIT	END UNIT (189725)	END UNIT (189702)
Lighting Point	33	31	31	32
Power Point	24	24	24	24
Fan Point	7	7	7	7
TV Antenna Point	3	3	3	3
Air-Cond Point	4	4	4	4
Water Heater Point	1	1	1	1
Bell Point	1	1	1	1
Power Auto Gate Point	2	2	2	2
Isolator Point	1	-	-	-
Data Point	3	3	3	3
Telephone Point	2	2	2	2
INTERNAL TELECOMMUNICATION	3 units			



07 360 2692

No. Lesen Pemaju: 8918-43/10-2021/0896(L). No. Permit Iklan & Jualan: 8918-43/10-2021/0896(P) Tempoh Sah laku Lesen: Dari: 4/10/2019 hingga 3/10/2021 Tempoh sah laku Permit Iklan Jualan: Dari: 4/10/2019 hingga 3/10/2021. Peperangan Tanah: Hakmilik kekal. Bebanan Tanah: Tiada. Pihak Berkuasa yang Meluluskan: Majlis Bandaraya Johor Bahru, No. Pelan Bangunan (B22M): MB/89/U/2016/14 (RCN/85/13). Jenis Rumah 1: Rumah Teres 2 Tingkat (AMELIA 1); Luas Binaan: 1,742kq. Luas Tanah: 1,400kq. Jumlah Unit: 20 unit. Harga Min: RM728,000 - Max: RM808,300. Jenis Rumah 2: Rumah Teres 2 Tingkat (CLOVER 1); Luas Binaan: 2,073kq. Luas Tanah: 1,680kq. Jumlah Unit: 34 unit. Harga Min: RM881,000 - Max: RM1,126,900. Jenis Rumah 3: Rumah Teres 2 Tingkat (CLOVER 3); Luas Binaan: 2,210kq. Luas Tanah: 1,680kq. Jumlah Unit: 35 unit. Harga Min: RM929,000 - Max: RM1,183,200. Jenis Rumah 4: Rumah Teres 2 Tingkat (DAPHNE); Luas Binaan: 2,664kq. Luas Tanah: 1,820kq. Jumlah Unit: 20 unit. Harga Min: RM1,093,000 - Max: RM1,333,700. Jenis Rumah 5: Rumah Berkembar 2 Tingkat (EVELYN 2); Luas Binaan: 3,032kq. Luas Tanah: 3,200kq. Jumlah Unit: 28 unit. Harga Min: RM1,558,000 - Max: RM1,900,000. Diskaun 15% untuk Bumiputera. Tarikh dijangka siap: Julai 2021. Pemaju: JOHOR LAND BERHAD, Alamat Pemaju: Kompleks Mutiara Johor Land, Jalan Bukit Mutiara, Bandar Dato Onn 81100, Johor Bahru. No. Tel: 07-360 2692. Sekatan Kepentingan: Tanah yang terkandung di dalam hakmilik ini tidak boleh dijual atau dipindahtitik, dengan apa cara sekalipun, kepada Bukan Warganegara/Siprakit Asing tanpa persetujuan Pihak Berkuasa Negeri.

Main Office :
Kompleks Mutiara Johor Land, Jalan Bukit Mutiara, Bandar Dato Onn, 81100 Johor Bahru. Tel : (07) 3564 888 Fax : (07) 3564 889

Sales Gallery :
No. 2, Jalan Perjiranan 2/1, Perjiranan 2, Bandar Dato Onn, 81100, Johor Bahru. Tel : (07) 360 2692 Fax : (07) 360 2693