

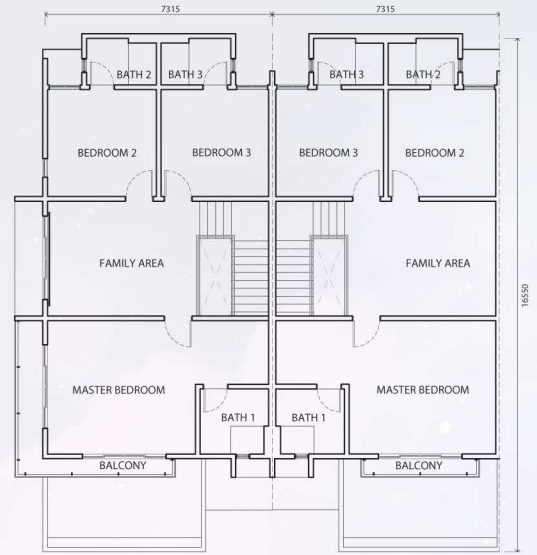
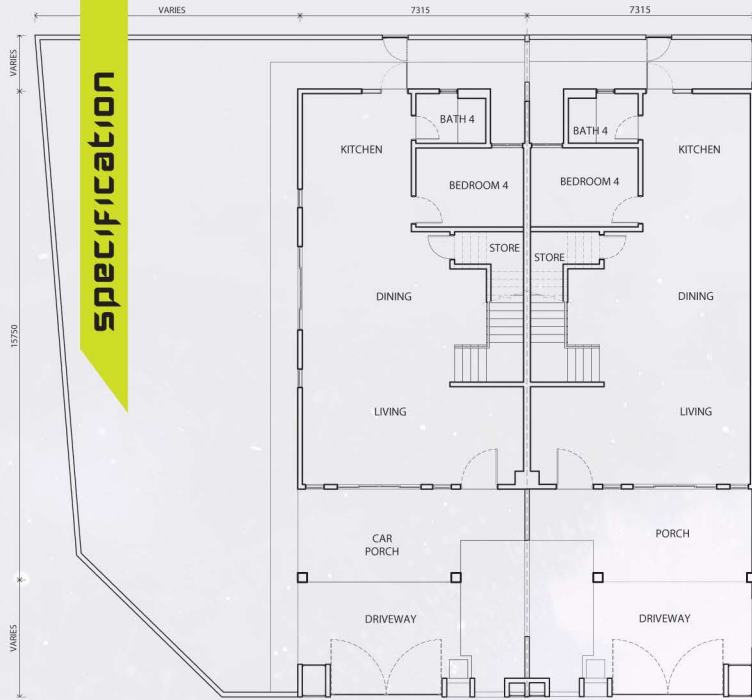
Come home to  
**BandarDato'Onn**  
Johor Bahru  
*A Jewel OF*  
ISKANDAR MALAYSIA...

# clover 3

2 storey terrace house

24' X 70' | Built-up area:  
2,210 sf





◀ ground floor | first floor ▶

<b>STRUCTURE</b>	Reinforced Concrete
<b>WALL</b>	Clay Bricks
<b>ROOF COVERING</b>	Clay Tiles
<b>ROOF FRAMING</b>	Steel
<b>CEILING</b>	Skim Coat, Plaster Ceiling
<b>WINDOWS</b>	Aluminium Framed Glass Window
<b>DOORS</b>	Solid Timber Door Solid Engineered / Timber Door Aluminium Framed Glass Sliding Door
<b>IRONMONGERY</b>	Lever, Knob
<b>WALL FINISHES</b>	
Kitchen	2100mm Height Porcelain Tiles & Emulsion Paint
Bathroom 1, 2, 3 & 4	Ceiling Height Porcelain Tiles
Bin Compartment	Ceramic Tiles
Others	Cement Plaster & Emulsion Paint
<b>FLOOR FINISHES</b>	
Living	Porcelain Tiles
Dining	Porcelain Tiles
Kitchen	Porcelain Tiles
Staircase	Porcelain Tiles
Family Area	Porcelain Tiles
Master Bedroom	Porcelain Tiles
Bedroom 2, 3 & 4	Porcelain Tiles
Bathroom 1, 2, 3 & 4	Porcelain Tiles
Balcony	Porcelain Tiles
Terrace	Porcelain Tiles
Car Porch	Porcelain Tiles
Driveway	Cement Render
Bin Compartment	Ceramic Tiles
Store	Cement Render
Others	Cement Render

**PLUMBING AND SANITARY FITTINGS**

Bathroom 1, 2, 3 & 4

Kitchen  
Yard

**ELECTRICAL INSTALLATION**

Lighting Point  
Power Point  
Fan Point  
TV Antenna Point  
Air-Cond Point  
Water Heater Point  
Bell Point  
Automatic Gate Point  
Isolator Point  
Data Point  
Telephone Point

**INTERNAL TELECOMMUNICATION**

**TRUNKING CABLING AND SUPPLY**

**FENCING**

Front & Front Side Fencing  
Rear & Rear Side Fencing  
Front & Rear Gate Door

**TURFING**

**GAS PIPING**

**floor plan**

Water Closet, Wash Hand Basin,  
Shower Rose, Tissue Holder, Hand Bidet,  
Hose Bib Tap  
Set of Sink, Tap  
Tap

	<b>Corner Lot</b>	<b>Intermediate Lot</b>
Lighting Point	34	31
Power Point	24	24
Fan Point	7	7
TV Antenna Point	3	3
Air-Cond Point	4	4
Water Heater Point	1	1
Bell Point	1	1
Automatic Gate Point	2	2
Isolator Point	1	-
Data Point	3	3
Telephone Point	2	2
<b>INTERNAL TELECOMMUNICATION</b>	3 units	
<b>FENCING</b>		Cement Brick wall with Mild Steel Grille
		Cement Brick wall with Mild Steel Grille
		Mild Steel
		Included
		NIL

**07 360 2692**

Developer : **JOHOR LAND BERHAD**  
(A member of Johor Corporation group of companies) 12379-K

**Main Office :**  
Kompleks Mutiara Johor Land, Jalan Bukit Mutiara, Bandar Dato' Onn,  
81100 Johor Bahru. Tel : (07) 3564 888 Fax : (07) 3564 889

**Sales Gallery :**  
No. 2, Jalan Perjiranan 2/1, Perjiranan 2, Bandar Dato' Onn, 81100,  
Johor Bahru. Tel : (07) 360 2692 Fax : (07) 360 2693

No. Lesen Pemaju: 8918-43/10-2021/0896(L). No. Permit Iklan & Jualan: 8918-43/10-2021/0896(P) Tempoh Sahlaku Lesen: Dari: 4/10/2019 hingga 3/10/2021 Tempoh sah laku Permit Iklan Jualan: Dari: 4/10/2019 hingga 3/10/2021. Peperangan Tanah: Hakmilik kekal. Bebanan Tanah: Tiada. Pihak Berkuasa yang Meluluskan: Majlis Bandaraya Johor Bahru, No. Pelan Bangunan (B22N): M8/89/U/2016/14/RSN/03/13. Jenis Rumah: 1: Rumah Teres 2 Tingkat (AMELIA 1); Luas Binaan: 1,742sq. Luas Tanah: 1,400sq. Jumlah Unit: 20 unit. Harga Min: RM728,000 - Max: RM808,300. Jenis Rumah: 2: Rumah Teres 2 Tingkat (CLOVER 1); Luas Binaan: 2,073sq. Luas Tanah: 1,680sq. Jumlah Unit: 34 unit. Harga Min: RM881,000 - Max: RM1,126,900. Jenis Rumah: 3: Rumah Teres 2 Tingkat (CLOVER 3); Luas Binaan: 2,210sq. Luas Tanah: 1,680sq. Jumlah Unit: 35 unit. Harga Min: RM929,000 - Max: RM1,183,200. Jenis Rumah: 4: Rumah Teres 2 Tingkat (DAPHNE); Luas Binaan: 2,664sq. Luas Tanah: 1,820sq. Jumlah Unit: 20 unit. Harga Min: RM1,093,000 - Max: RM1,333,700. Jenis Rumah: 5: Rumah Berkembar 2 Tingkat (EVELYN 2); Luas Binaan: 3,032sq. Luas Tanah: 3,200sq. Jumlah Unit: 28 unit. Harga Min: RM1,558,000 - Max: RM1,900,000. Diskaun 15% untuk Bumiputera. Tarikh dijangka siap: Julai 2021. Pemaju: JOHOR LAND BERHAD, Alamat Pemaju: Kompleks Mutiara Johor Land, Jalan Bukit Mutiara, Bandar Dato' Onn 81100, Johor Bahru. No. Tel: 07-360 2692. Sekatan Kepentingan: Tanah yang terkandung di dalam hakmilik ini tidak boleh dijual atau dipindahtitlik dengan apa cara sekalipun kepada Bukan Warganegara/Sipakut asing tanpa persetujuan Pihak Berkuasa Negeri.  
IKLAN INI TELAH DILULUSKAN OLEH JABATAN PERUMAHAN NEGARA